



Expression of Interest (EOI) and Prequalification

Scope: Fabrication of Topsides Appurtenances

Reference: EOI-103543-KOS-18

Issue Date: 2-Nov-17

Closing Date: 17-Nov-17

Kiewit is seeking Expression of Interest (EOI) and Prequalification responses from interested companies for the **Fabrication of Topside Appurtenances** for use on the Husky West White Rose Project. Husky has awarded Kiewit a contract for the Fabrication of the Living Quarters. Kiewit will manage the fabrication of the Topsides Appurtenances on Husky's behalf.

For additional Project information, please visit the Husky WWRP website at http://wrep.huskyenergy.com/Project_overview or KOS project website at <https://wwrplivingquarters.com/>

General Requirements

Respondents to the EOI and prequalification must be qualified to conduct the scope as outlined in the Scope of Work below. They are required to demonstrate their capabilities and experiences via a formal response to this EOI/Prequalification advertisement. The Prequalification Questionnaire, which can be downloaded at this website: <https://wwrplivingquarters.com/procurement/>, is largely based on Kiewit's Supplier Management System and contains detailed questions regarding your company's technical, quality, health, safety, environment and commercial capabilities. Respondents who are successfully prequalified and are invited to participate in any Request for Proposal (RFP) process, must first complete a Non-Disclosure Agreement / Confidentiality Agreement and will also be required to formally register with Ariba (Kiewit's supplier registration website), details of which will be provided later.

Scope of Work

The Scope of Work for Topside Appurtenances contains three components. Interested Fabricators may express interest in one, two or all three scopes listed below:

- Helideck and Parking Structure

- Life Boat Stations (East and West)
- Flare Boom

1.0 Helideck and Parking Structure

The Fabricator is required to construct and outfit an independent Helideck as well as an independent Parking Structure which will be installed later on the West White Rose Living Quarters Module. Fabrication and outfitting will be based upon complete sets of drawings which will be provided to the Fabricator during the detailed engineering phase.

A. Helideck

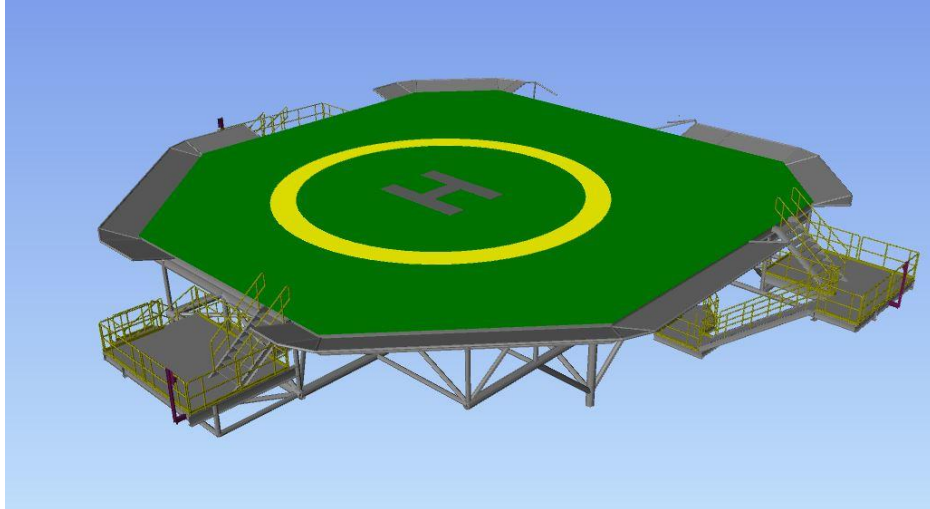
- Will comply with C-NLOPB Guidelines and CAA CAP 437 requirements as well as Transport Canada TP4414 Standard for helideck firefighting equipment
- Suitable for landing and taking off operations of an EH101 (CH-149 Cormorant) and Sikorsky S-92 helicopters
- Approximate dimensions: 23m diameter, 6m high
- Approximate outfitted weight: 175MT
- Constructed from Carbon Steel and will primarily be tubular truss design with some tubular to rolled beam connections as well
- Equipped with three (3) firefighting stations with walkway/stairs as per final design

B. Parking Area

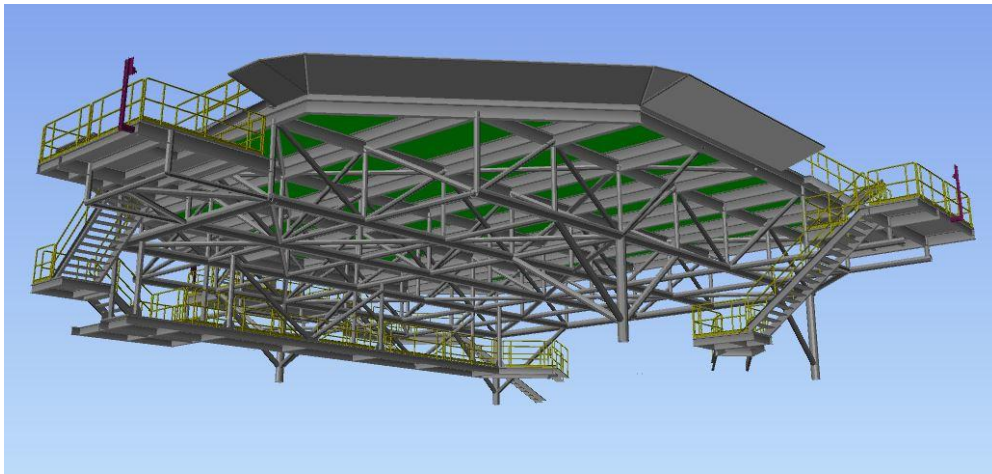
- Suitable for parking of the Sikorsky S-92 helicopter
- Approximate dimensions: 8m wide x 18m long x 6m high
- Approximate outfitted weight: 50MT
- Constructed from Carbon Steel and will primarily be tubular truss design with some tubular to rolled beam connections as well
- Equipped with an equipment access platform along with access stairs as per final design

C. General

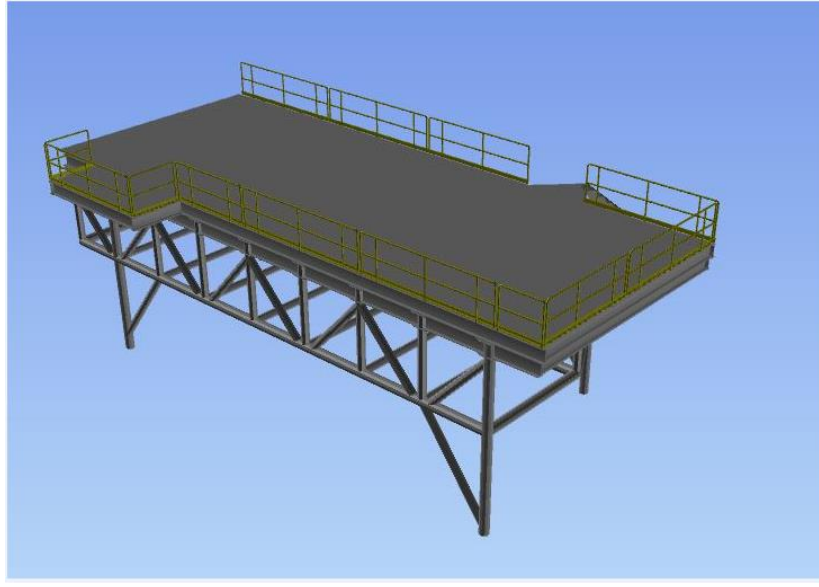
- The Helideck and Parking Structures will be fabricated as complete assemblies with minimum outfitting and hook-up once delivered to the final fabrication yard
- The Aluminum Helideck and Parking Area Pancake will be free issued to the Helideck Fabricator for assembly on the steel structure.
- All welds are to be full penetration welds and in accordance with offshore industry standards.
- Coating shall be as per Project Specifications
- The structural steel required to fabricate the structure as per IFC drawings and Project Specifications shall be free issued to the Fabricator.



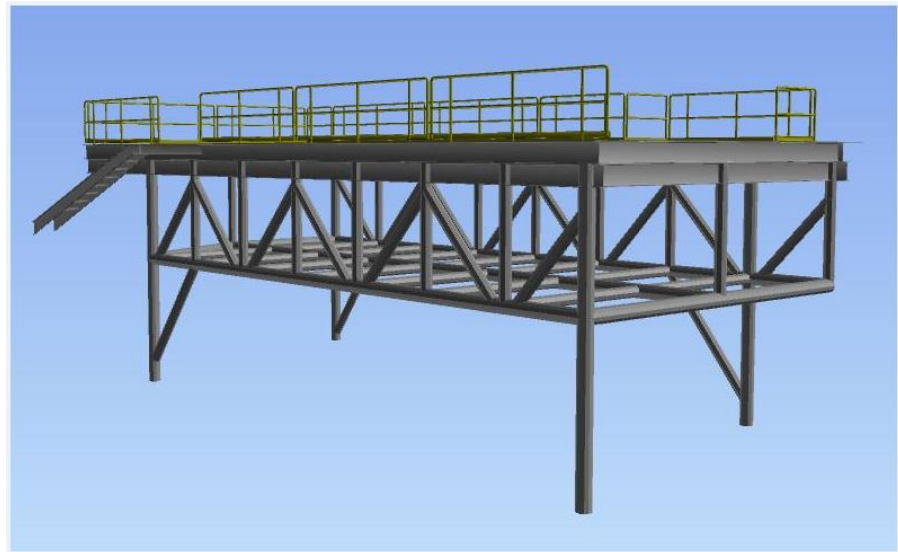
General rendering of the Helideck Structure and Aluminum Pancake (for information only)



General rendering of the Helideck Truss Structure and access walkways (for information only)



General rendering of the Parking Area Structure and Aluminum Pancake (for information only)



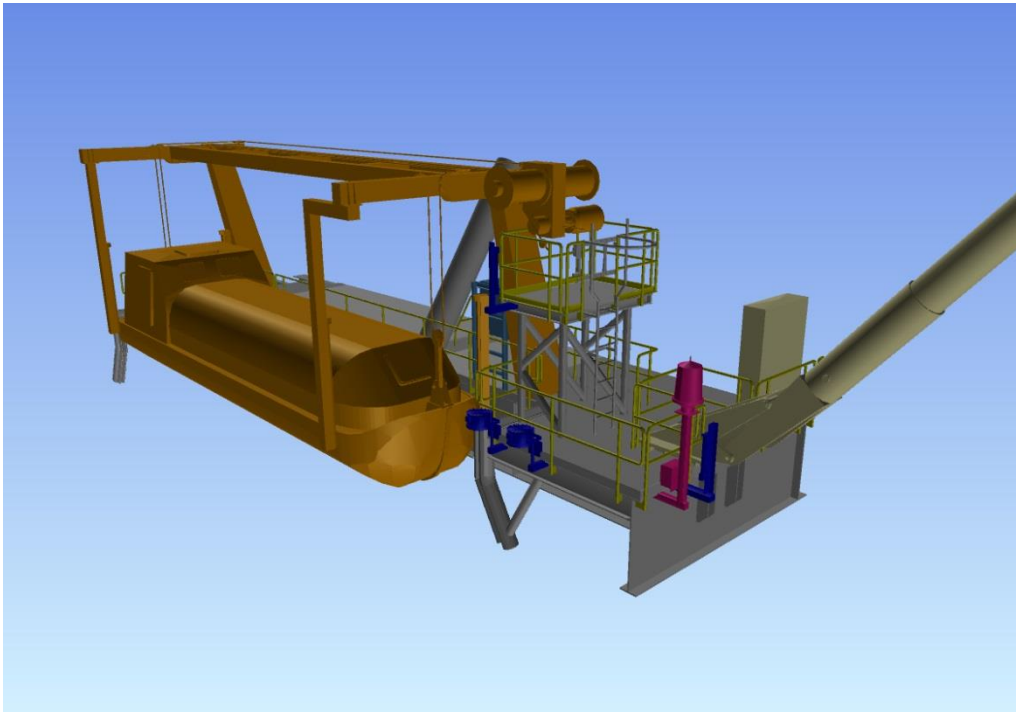
General rendering of the Parking Area Truss Structure (for information only)

2.0 Life Boat Stations

The Fabricator is required to construct and outfit two life boat stations (East and West) as independent structures for the West White Rose Facilities Services Block (West) and Toppides (East) to be installed by others. Fabrication and outfitting will be based upon complete sets of drawings which will be provided to the Fabricator during the detailed engineering phase.

A. East Life Boat Station (ELBS)

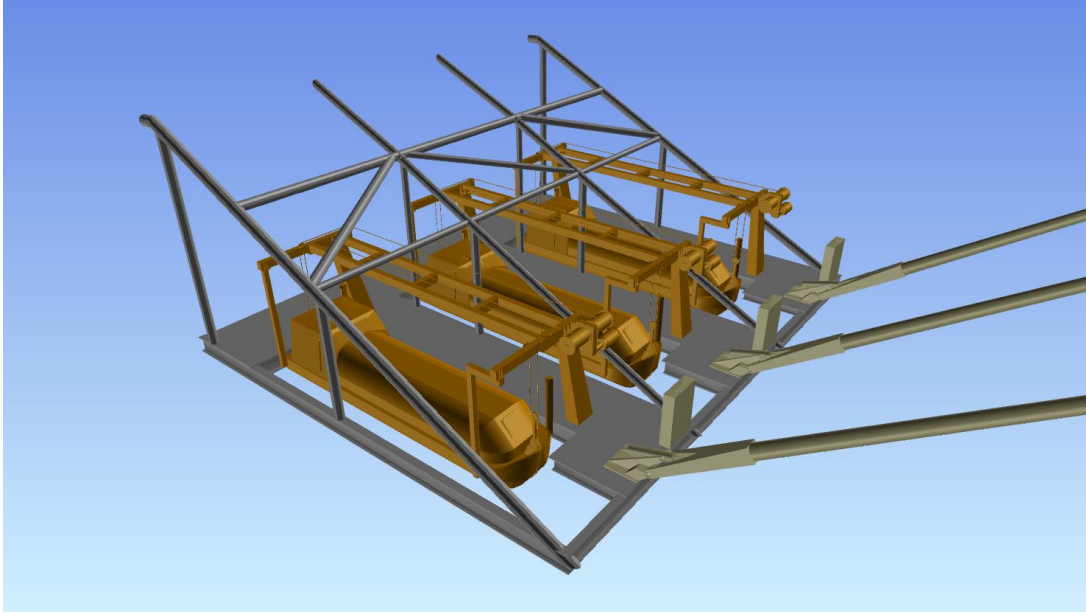
- The ELBS will be equipped with one (1) TEMPSC Life Boat along with any associated launching equipment required to permit safe and efficient launching and retrieval of the life boat.
- The life boat stations will be located at an elevation greater than 30m from sea level
- Dedicated PROD system will also be required.
- The ELBS will be constructed from Carbon Steel and will primarily be a structural beam and column design



General rendering of the ELBS (for information only)

B. West Life Boat Station (WLBS)

- The WLBS will be equipped with three (3) TEMPSC Life Boats along with any associated launching equipment required to permit safe and efficient launching and retrieval of the life boat.
- Dedicated PROD systems will also be required.
- Approximate dimensions: 8m wide x 18m long x 6m high
- Approximate outfitted weight: 130MT
- Constructed from Carbon Steel and will primarily be tubular truss design with some tubular to rolled beam connections



General rendering of the WLBS structure (for information only)

C. General (applicable to both ELBS and WLBS)

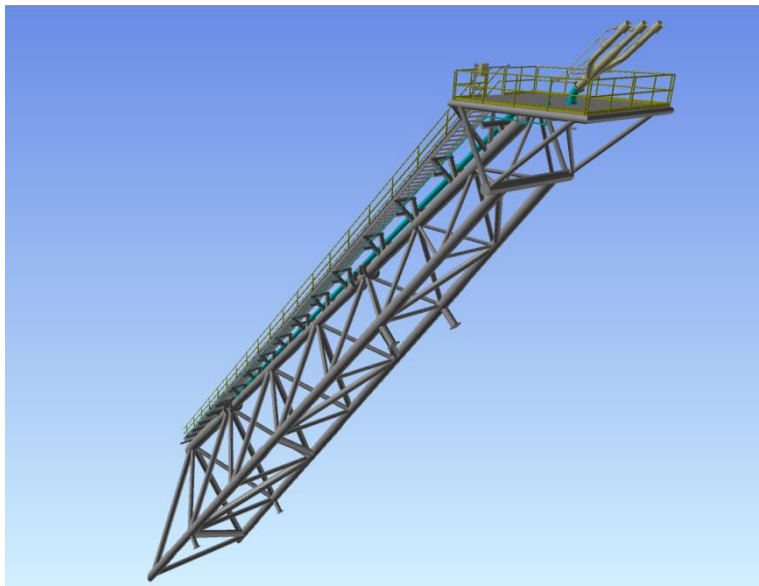
- The TEMPSC Life Boats, Davits and PRODS are free issued and are not part of the scope of the Fabricator. The davits and PROD Boom deck mount will be free issued to the Fabricator for installation. Final installation, including PRODs and Lifeboats, will be at the Topsides Fabrication Yard by others.
- All equipment will be outfitted to ensure proper fit-up but may require removal during transportation.
- The life boat stations will be fabricated as complete assemblies with minimum outfitting and hook-up at the Topsides Fabrication yard.
- All welds are to be full penetration welds and in accordance with offshore industry standards.
- Coating shall be as per Project Specifications.
- The structural steel required to fabricate the structure as per IFC drawings and Project Specifications shall be free issued to the Fabricator.

3.0 Flare Boom

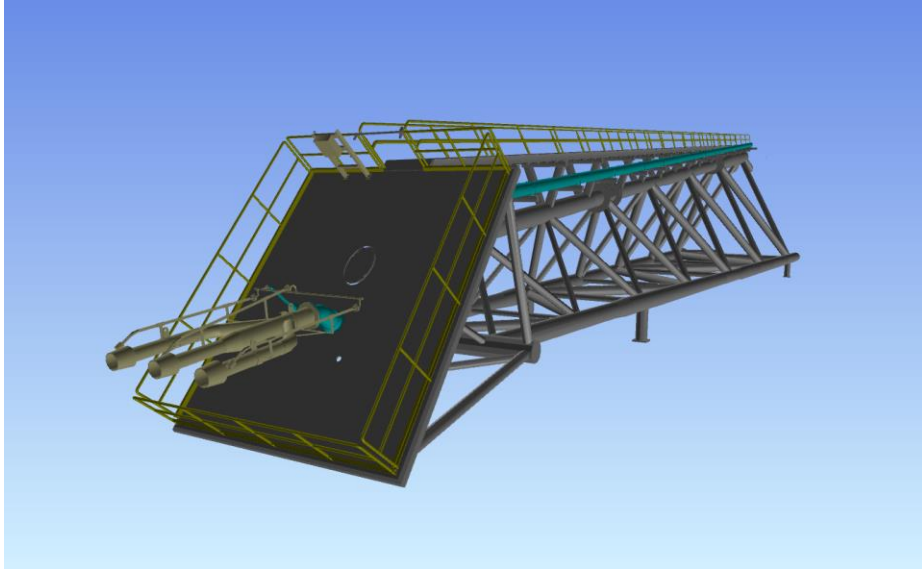
The flare system on the Wellhead Platform will serve as safety facility to collect and safely dispose hydrocarbon gases due to either a process upset or a planned depressurization. Fabrication and outfitting will be based on complete sets of drawings which will be provided to the Fabricator during the detailed engineering phase.

The Flare Boom structure shall be as outlined below:

- Constructed from carbon steel and will primarily be tubular design with some tubular to beam connections.
- 50m in length and cantilevered at a 45-degree angle on the platform. The flare piping is within the 12" to 16" range.
- Outfitted weight approximately 140MT
- All welds to be full penetration welds and in accordance with offshore industry standards.
- Upper sections will be coated with a heat resistance paint. Coatings shall be as per Project Specifications.
- The structural steel required to fabricate the structure as per IFC drawings and Project Specifications shall be free issued to the Fabricator.



General rendering of the Flare Boom (for information only)



General rendering of the Flare Boom (for information only)

Fair and Equal Opportunity

Kiewit strongly supports providing opportunities to Canadian and, in particular Newfoundland and Labrador companies and individuals on a commercially competitive, technically acceptable and best value basis. Kiewit also encourages the participation of members of designated groups (women; Aboriginal peoples, persons with disabilities and members of visible minorities) and corporations or cooperatives owned by them to supply the services required as stated herewith.

Prequalified companies will be required to complete a Canada/Newfoundland and Labrador Benefits questionnaire during the RFP stage. The successful proponent(s) must then comply with the statutory requirements and with the benefit commitments submitted during RFP.

SUBMISSION INSTRUCTION

Please provide one (1) original, one (1) copy and one (1) softcopy by email of your formal response (which shall include, but not limited to the completed prequalification questionnaire as well as detailed contact information) no later than **3PM, Thursday, 17-November-17** to the address shown below:

Attn: **Glynn Smith, Facilities Manager**

Email: Glynn.Smith@kiewit.com copied to Antoine.Gregoire@Kiewit.com

Address: Kiewit Offshore Services Ltd., Spanish Room Rd., Marystown, NL, AOE 2M0

**** Please ensure to mention "Fabrication of Topside Appurtenances / Reference EOI-103543-KOS-18" on the envelope containing your submission and on the email subject line.*